

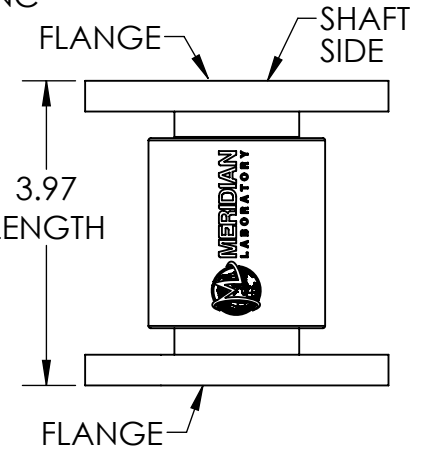
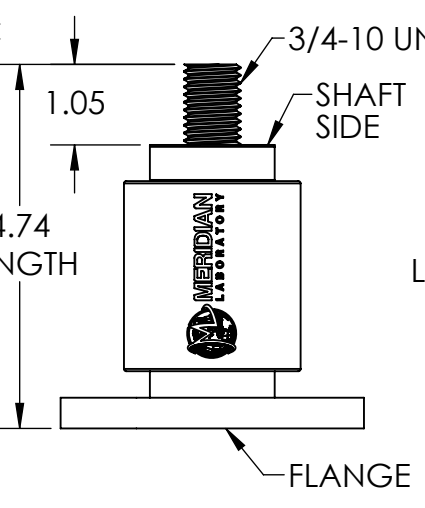
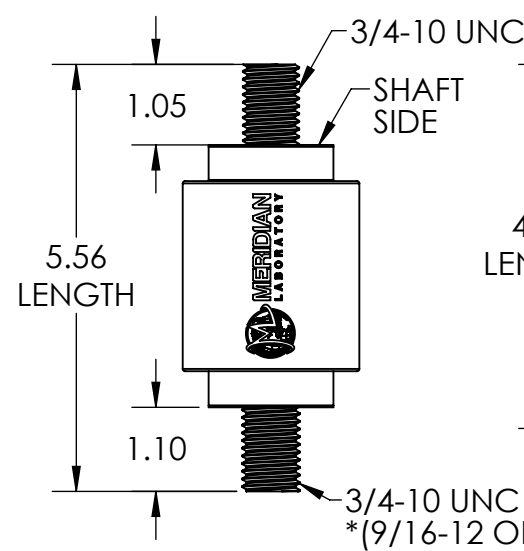
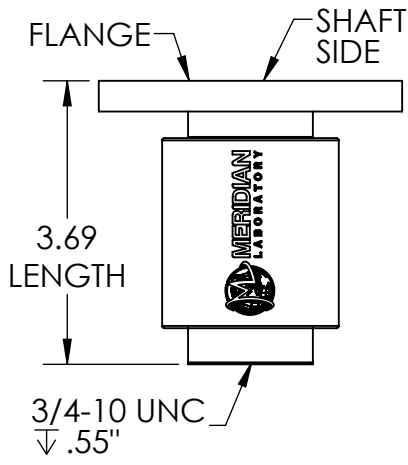
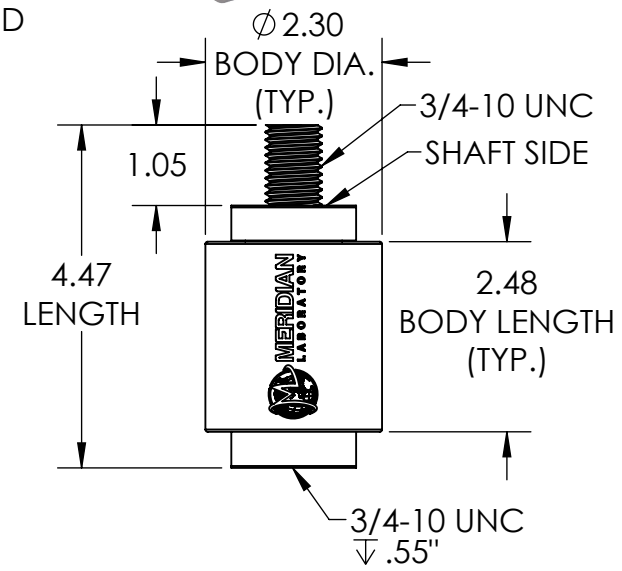
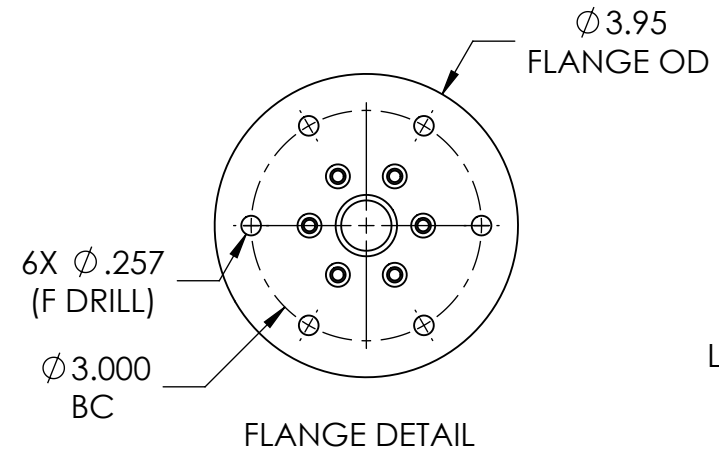
**SPECIFICATIONS**

NUMBER OF CIRCUITS	1
DC CURRENT	800A
AC[60Hz] CURRENT	700A
AC[120Hz] CURRENT	600A
<i>For all other AC frequencies, contact Meridian Lab</i>	
VOLTAGE	N/A
MAX CONTINUOUS RPM	1000
STATIC TORQUE	< 0.70 in-lbs < 79.1 mNm
OPERATING TEMPERATURE [Non-RoHS]	-20°C TO 70°C
OPERATING TEMPERATURE [RoHS]	10°C TO 70°C
HOUSING MATERIAL	304 STAINLESS STEEL
CONTACT RESISTANCE	<1mΩ
DYNAMIC RESISTANCE	<1mΩ (0 TO 1000 RPM)
WEIGHT (±15%)	6.5 LBS

**NOTES**

- SPECIFICATIONS ARE NOT GUARANTEED WHILE IN AN ABSOLUTE MAXIMUM CONDITION
- SHAFT AND BODY ENDS MUST NOT BOTH BE HARD MOUNTED TO ALLOW FOR SMALL NON-CONCENTRIC ROTATION.
- PRODUCT DIMENSIONS AND SPECIFICATIONS ARE PROVIDED FOR REFERENCE ONLY, ARE NOT GUARANTEED, AND ARE SUBJECT TO CHANGE WITHOUT NOTICE.
- MODEL ERG-800-31 IS REPLACEMENT FOR (LEGACY) ROTOCON MC-500; FEATURES 9/16-12 THREADED STUD ON BODY SIDE ONLY

**INSTALLATION NOTE:** DO NOT RIGIDLY MOUNT BOTH SHAFT AND BODY AND ENSURE CABLE WEIGHT IS <25 LBS



**PART NUMBER GUIDE**

**ERG - 800 -**

- 0 = THREADED HOLE (3/4-10)
- 1 = THREADED STUD (3/4-10)
- 2 = FLANGE (BODY SIDE, SHAFT SIDE)

R = RoHS COMPLIANT  
 BLANK = NOT RoHS COMPLIANT  
 \*FOR RoHS UNITS ADD .050\"/>

**ERG-800-01**

Hardware Inc.:  
 2x 3/4\"/>

**ERG-800-02**

Hardware Inc.:  
 1x 3/4\"/>

**ERG-800-11**

Hardware Inc.:  
 2x 3/4\"/>

**ERG-800-21**

Hardware Inc.:  
 1x 3/4\"/>

**ERG-800-22**

Hardware Inc.:  
 N/A

This drawing is proprietary to Meridian Laboratory Inc. and may not be copied, disclosed, or distributed without explicit written permission.

SCALE: 1:2.5

DEC. TOL ±.01  
 DEC. TOL ±.1  
 ANG. TOL ±1/2

**MERIDIAN LABORATORY**  
 Title ERG-800 TECHNICAL SPECIFICATIONS

Drawn By JCE Date 03/23/2021 Model No. ERG-800

Rev **A**  
 SHEET 1 OF 1